

Percent Error

Mr. Sudbury

Percent Error

- ▶ Percent error is a way for scientist to examine how far off they are from the accepted value of something.
- ▶ We will use the density of a marble as an example.

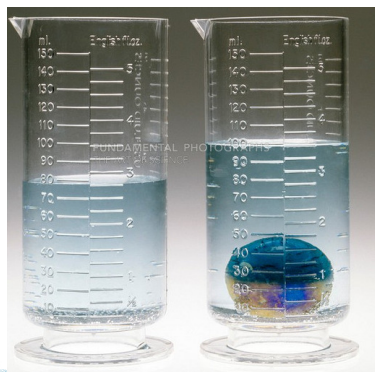
$$d = \frac{m}{V}$$



Calculate Density

- ▶ Volume by displacement

- ▶ Mass on balance:



What is our percent error?

- ▶ Formula

$$\frac{|Experimental\ value - Actual\ Value|}{Actual\ Value} \times 100\%$$